

39th Annual York-Hamilton Cattlemen's Beef Progress Show

SATURDAY, MARCH 28, 2009

at the York County Fairgrounds, York, NE

Pre-registration received by March 26, 2009 is \$25 per animal

March 27 and/or show day registration at \$30 per animal.

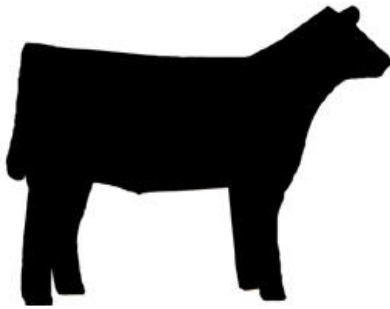
(\$15 per animal, for currently enrolled York & Hamilton 4-H & FFA youth and animals)

Make Checks payable to the York-Hamilton County Cattlemen.

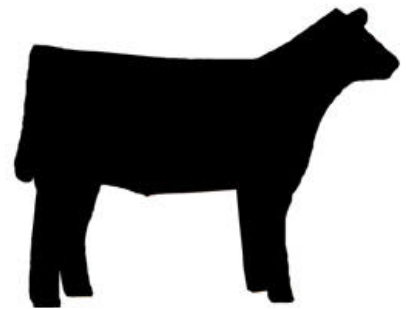
Show Flyers and Entry form can be found at www.york.unl.edu then click on 4-H Activities

Registration & weighin: Friday, Mar. 27, 5:00 to 8:00 pm & Sat. Mar. 28, 7:30 to 8:00 am

Show starts Saturday, March 28, 10:30 a.m.



JUDGE:
Bob Sunquist
Stanton, IA



This is a Junior Nebraska
Cattlemen sanctioned point
show

Classes and divisions to meet JNC guidelines

SHOW PRIZES

Entry fee money and sponsorship monies will be combined and paid out to the top placing breeding and market animals. Total payout of over \$1500 is expected.

Showmanship - no entry fees but exhibitors are asked to enter classes at check in time.

Specials gifts will be awarded to the top showmanship exhibitors. Each showmanship class exhibitor will get an award.

The York-Hamilton Cattlemen, the York County Fair Board or any of the representatives of those groups are not responsible for any loss or injuries,

This show hosted by:

YORK-HAMILTON COUNTY CATTLEMEN'S ASSOCIATION

For more information contact:

Kim Regier
Show Superintendent

Gerald Peterson
York County Extension Assistant
402-362-

5508 (daytime)
www.york.unl.edu

The UNL Block and Bridle Club's Big Red Beef Show is set for Sunday, March 29, at the York

Fairgrounds. Contact information on the back of this sheet.

YORK-HAMILTON CATTLEMEN'S RULES AND SHOW ORDER FOR 2009

The 2009 York-Hamilton County Cattlemen's Beef Progress Show is a Junior Nebraska Cattlemen sanctioned show. Junior Nebraska Cattlemen rules and guidelines will be used for the show.

The York-Hamilton Cattlemen's Beef Progress Show is open to all 2009 Nebraska, Iowa, Kansas and Missouri youth meeting age and affiliation guidelines, of the Junior Nebraska Cattlemen.

A. BREEDING HEIFERS - must be born between September 1, 2007 and December 31, of 2008.

Registered heifers must be accompanied by the original copy of their registration papers in order to show in their respective breed class.

Breed classes will be provided for all breeds as required by JNC guidelines.

A class for Commercial breeding heifers, those animals without current registration papers will be provided.

The Show management reserves the right to combine age classes within breeds to make certain there is competition for cattle entered, where the numbers of entries do not warrant all age classes.

B. SENIOR SHOWMANSHIP (Ages 16 and older on January 1, 2009)

C. INTERMEDIATE SHOWMANSHIP (Ages 12 to 15 years on January 1, 2009)

D. JUNIOR SHOWMANSHIP (Ages 8 to 11 years on January 1, 2009)

E. PROGRESS MARKET BEEF

All market heifers will be shown together in classes from lightweight to heavyweight. There are no breed classes in the market heifer show.

Classes for progress steers will be provided to meet Junior Nebraska Cattlemen guidelines, for breeds. Registration papers original copies will be required for an animal to be shown in a breed class. A crossbred division will be provided. Classes by weight, lightweight to heavyweight will be designated if numbers of animals within a breed warrants those classes.

+++++

No bedding will be provided. Straw, wood products and shavings are permitted. Exhibitors are asked to pull all bedding away from tie areas and walls of buildings at the end of the show.

York and Hamilton County special awards eligible animals and youth must be identified with official 4-H or FFA identification/ear tags and on file in the appropriate County Extension Office.

'PLEASE NOTE:' Some areas of the York County Fairgrounds stalling facilities have limited electrical service. Portable generators in those areas are welcomed and/or encouraged. Show management expects exhibitors to operate generators in a safe and courteous manner.

The UNL Block and Bridle Club's Big Red Beef Show is set for Sunday, March 29, at the York Fairgrounds. Please contact Shantile Kruse, phone (402)239-2833 in Lincoln, NE for information.